

INTRAORAL SCANNER CART



ABOUT FUSSEN

FUSSEN is a leading global provider of digital solutions for dentistry. Since its establishment in 2010, FUSSEN has been committed to providing comprehensive digital solutions for dental clinics, facilitating the digitized management of imaging equipment and supporting the dental industry in achieving full lifecycle management. Our products are distributed in over 50 countries worldwide, serving over 80,000 dental clinics globally. With a rich product line and advanced software functionalities, we offer diverse product combinations to meet the unique needs of different clinics and markets, making us the preferred choice for dental professionals.



YOUR ULTIMATE MOBILE WORKING STATION

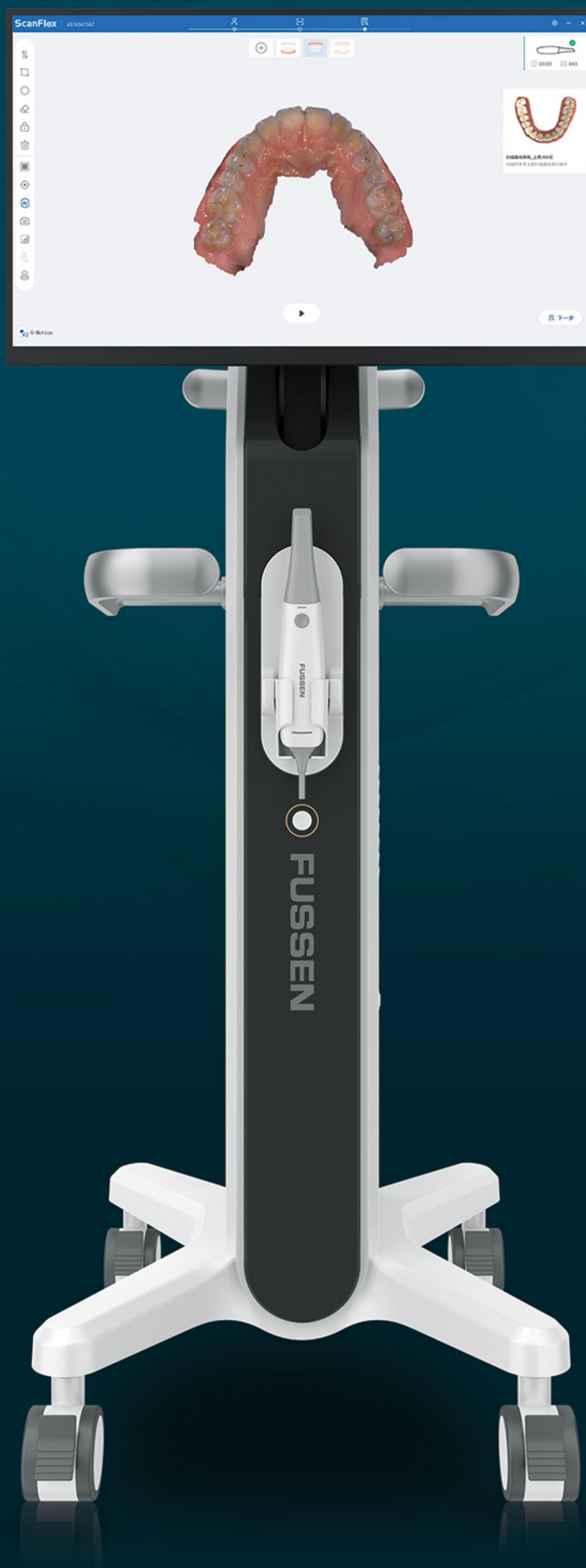
Touchscreen

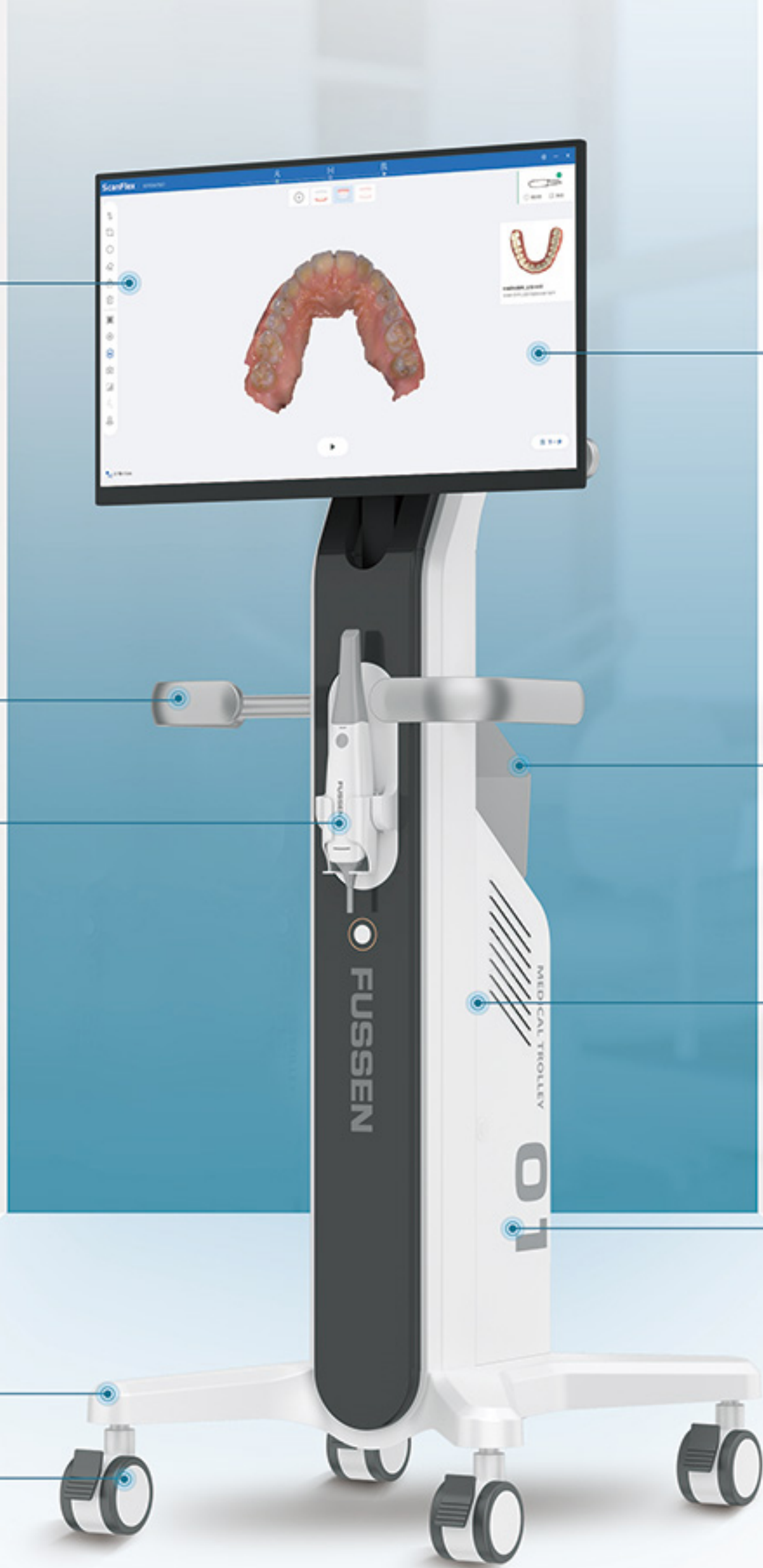
**PC
Included**

**All-In-One
Solution**

**Uninterruptible
Power Supply
Included**

**Compatible
With All
Fussen IOS**





TouchScreen, Adjustable Arm

- Adjustable height and angle
- Easy to control

Grips

- Ergonomic design front and back grips for easier control

Replaceable Scanner Holder

- Compatible with all Fussen's intraoral scanners

Cloud Storage

- Easy and efficient online communication

Removable Storage Case

- Portable storage case for small instruments

Built-in PC

- High-performance mini PC

Uninterruptible Power Supply (UPS)

- Prevent sudden power interruptions which may cause data loss

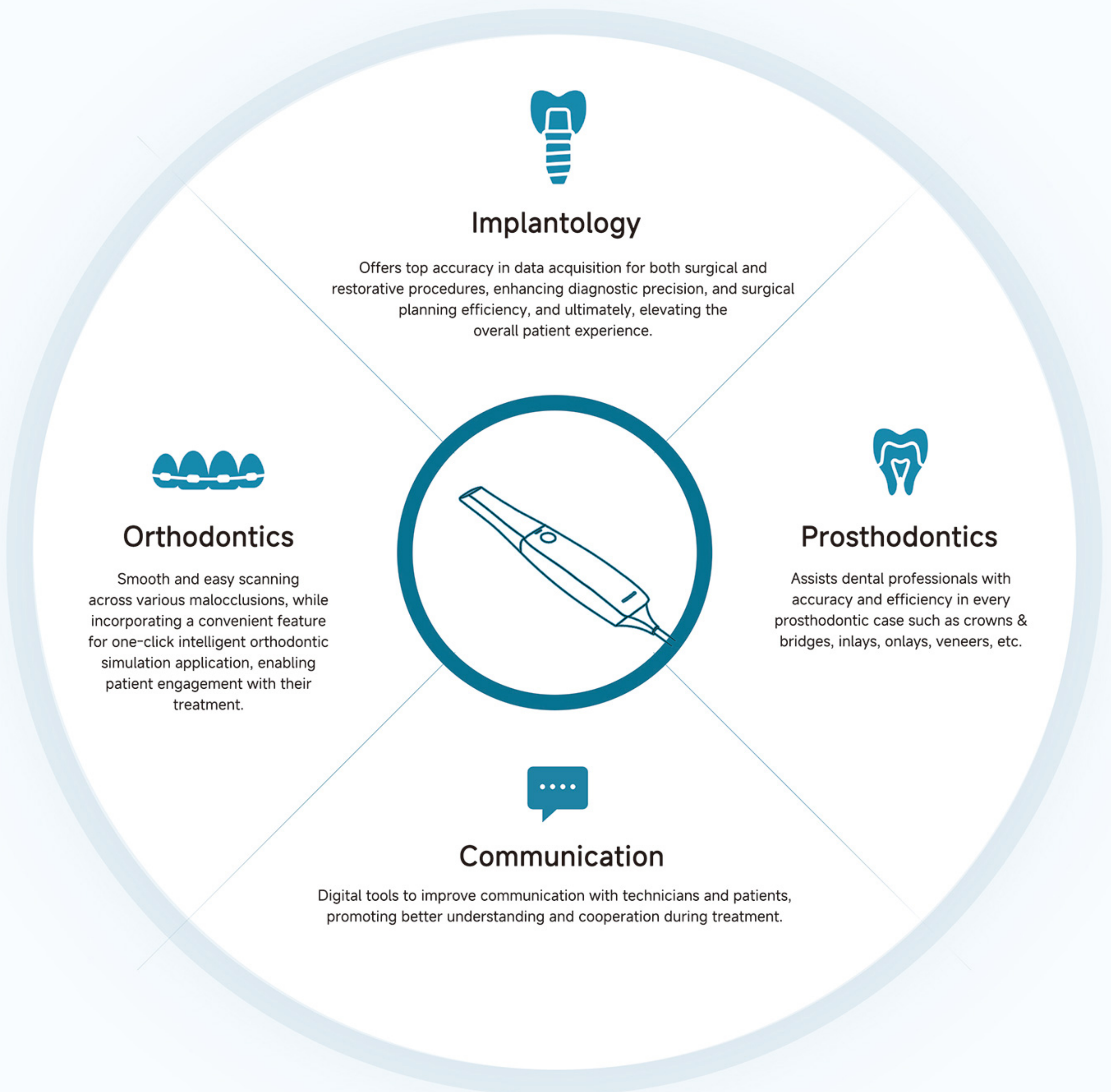
Stable Base Design

- Minimal space
- Maximum flexibility
- Maximum stability

Universal Wheels

- Lockable, Silent, Flexible

ALL-IN-ONE PLATFORM



ADVANCED DIGITAL TOOLS



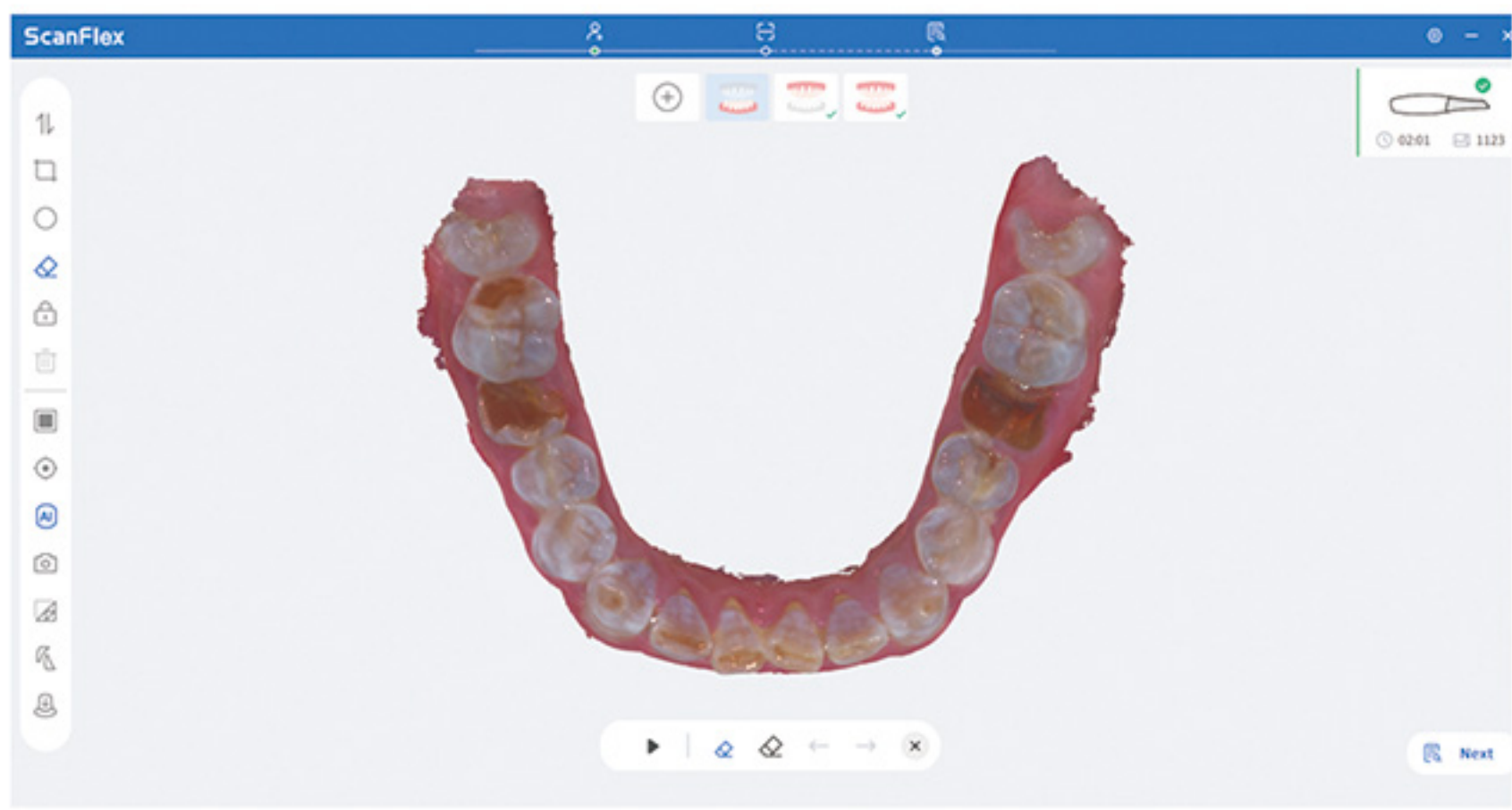
● Analysis Tools

The use of colour map to indicate the occlusion relationship and undercut depth



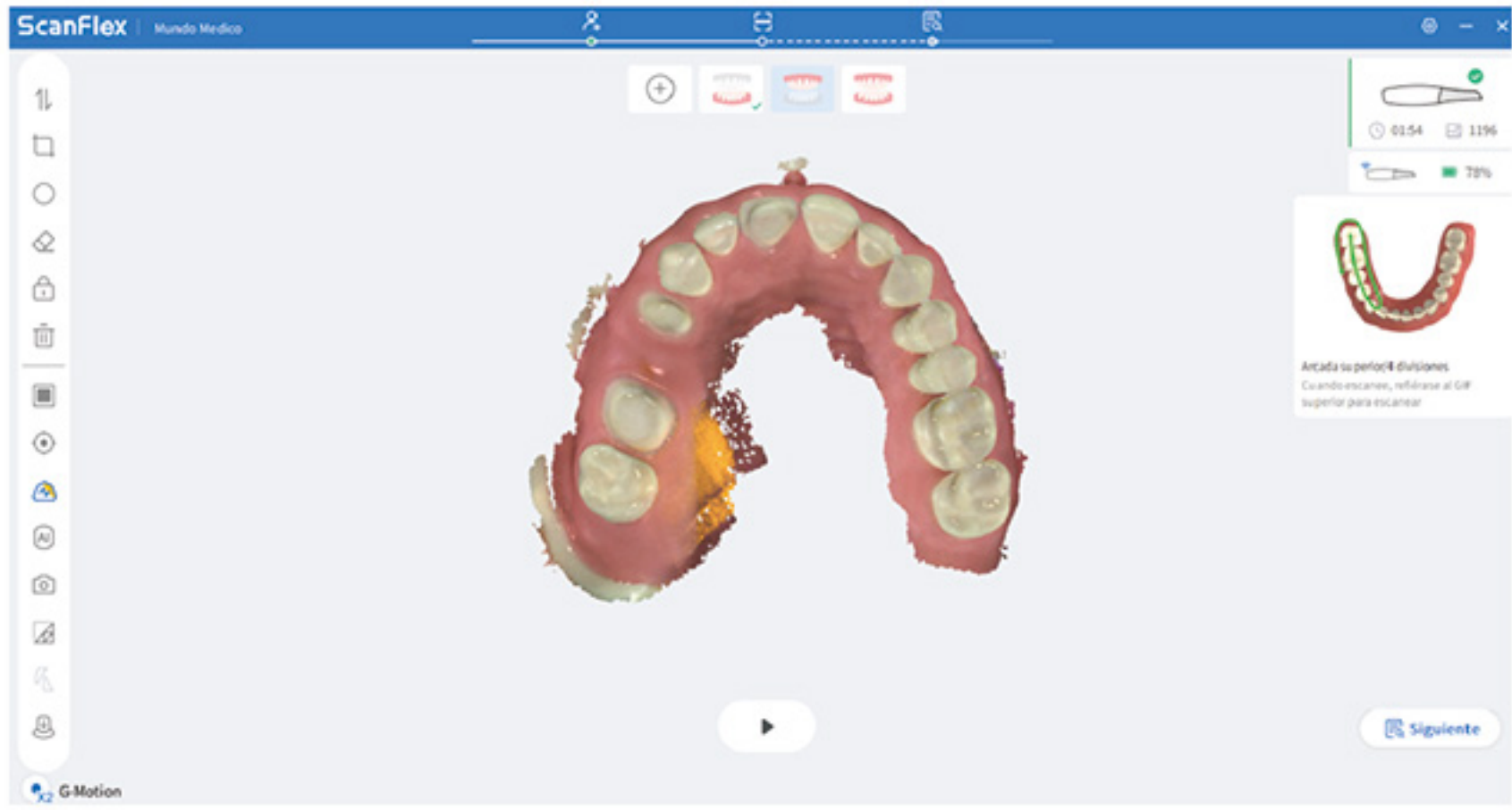
● Working Area Selection

Increases mesh density once optimization is finished



● AI Data Optimization

Automatically removes any unnecessary data such as gloves, tongue, etc



● Reliability Map

Shows the areas of unreliable data with orange color

COMPATIBILITY



S6000 IOS



S6500 IOS

SPECIFICATIONS

MODEL	INTRAORAL SCANNER CART
PC Specifications	CPU : New Core i7 RAM : 32G Hard Disk : 512GB Monitor : 23.8" Touch Screen GPU : NVIDIA RTX 3050 Ti 4GB WLAN : Build-in WiFi
USB Connectivity	USB 3.0 Port
Operating System	Windows 11 64bit



HQ: 9F, 10F, Building D1, Nanshan Park, 1001 Xueyuan Blvd, Taoyuan Street, Nanshan District, Shenzhen, China

WEB: www.fussengroup.com

CONTACT US:

sales@fussengroup.com

international.support@fussengroup.com

international.marketing@fussengroup.com



AUTHORIZED DISTRIBUTOR

